

# TagMaster

*North America, Inc.*

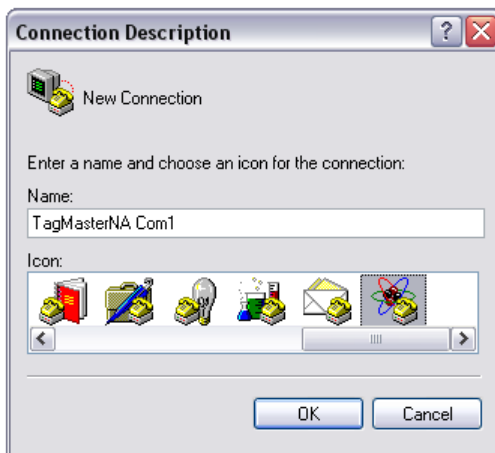
support@tagmasterna.com \* (253) 471-2731

To set up a new connection

1. Open [HyperTerminal](#).

(If the link above doesn't work – please see [Notes](#) at the end of these instructions)

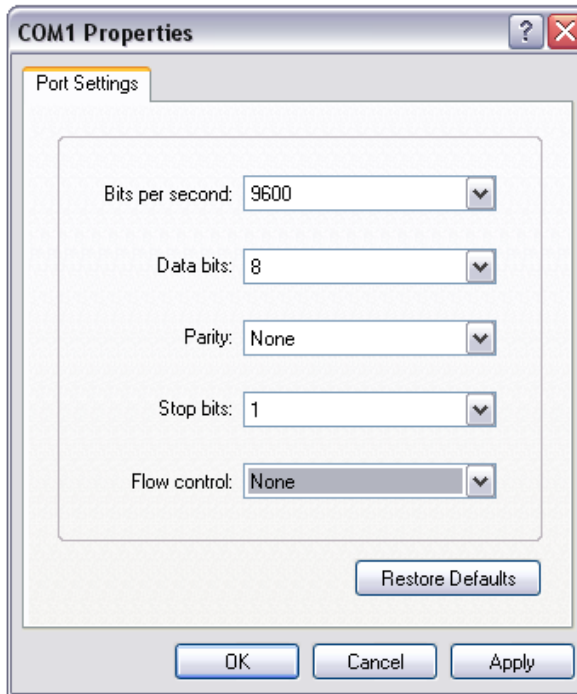
2. On the **File** menu, click **New Connection** (If not showing below).



3. In the **Name** box, type: TagMasterNA Com1 (or Com2 if used instead)
4. In the **Icon** box, click on any icon you like and then click **OK**.
5. In the **Connect To** dialog box, choose Com1 in the **Connect using** drop down box.



- Next in the COM1 (or Com2 if used instead) Properties box Enter:  
Bits per second = 9600  
Flow control = None  
and then click **OK**. (see below)



- Now press Enter on your keyboard twice to bring up the A and B menu

PassMan #.## (a)

Possible values for Menus:

A. System settings menu

B. Tag settings menu

Your choice (A or B):

- This ends this part of the instruction – please see the PassMan SW Manual for more options

#### Notes

- To open HyperTerminal, click **Start**, point to **All Programs**, point to **Accessories**, point to **Communications**, and then click **HyperTerminal**.